


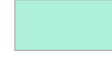



iSWM Criteria Community Inventory


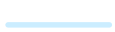
Land Use Conditions

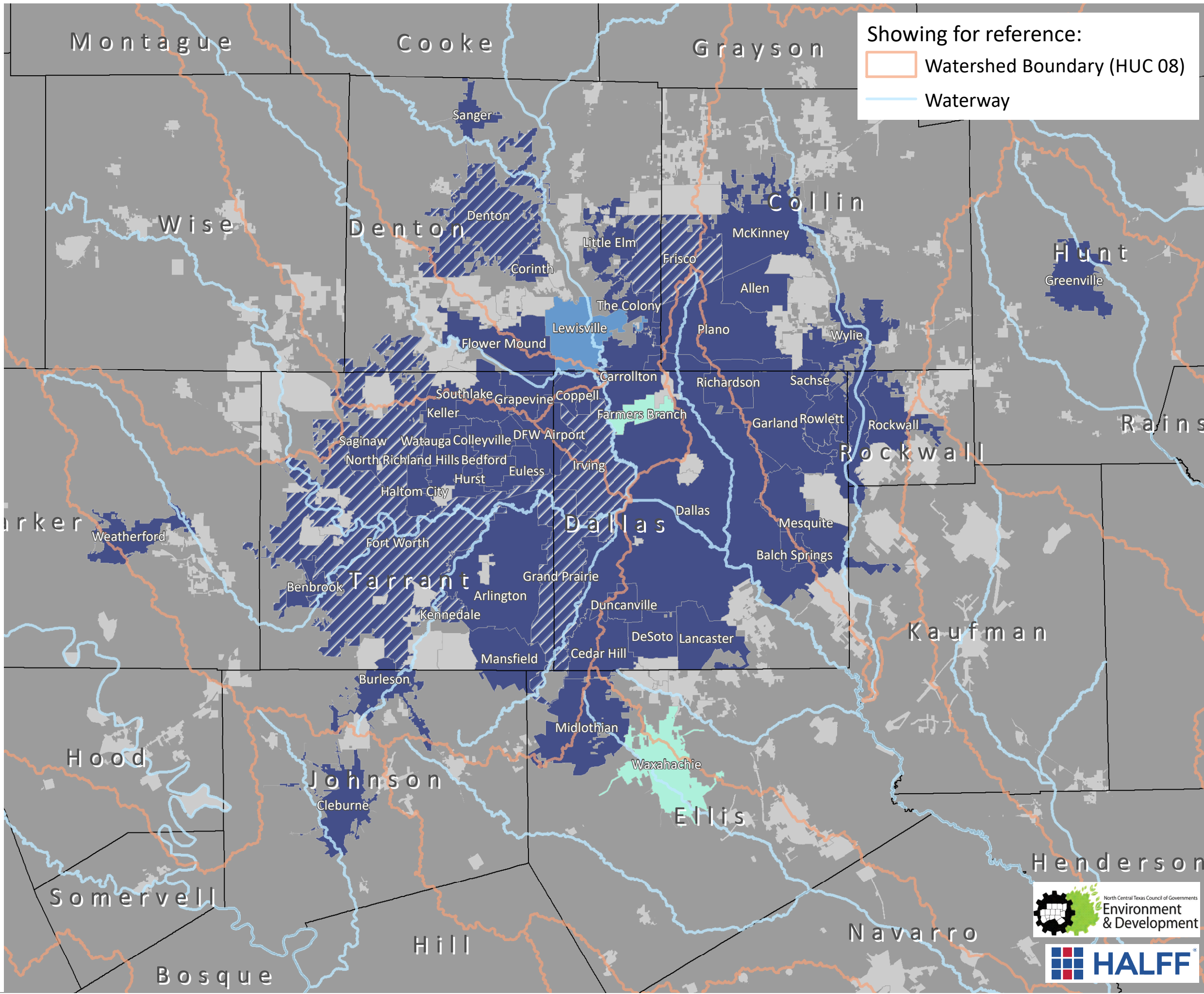
LEGEND

-  Silver Certified
-  Follows iSWM criteria
-  Partially follows iSWM criteria
-  No coordinating criteria found
-  Not reviewed

0 50,000 100,000 Feet



Showing for reference:
 Watershed Boundary (HUC 08)
 Waterway



Half Associates, Tetra Tech Inc., and Urban EcoPlan, in partnership with NCTCOG, has completed their Stormwater Criteria Community Inventory.

Ordinances and Drainage Criteria Manuals of fifty-three (53) communities were reviewed and compared to seventeen (17) iSWM Design Criteria:

- Site Plan Review Applicability
- Land Use Conditions
- Hydrologic Methods
- Open Channel Velocity Criteria/Energy Dissipation
- Detention Structure Discharge Criteria
- Streambank Protection
- Flood mitigation/Downstream Assessments
- Construction Controls
- Operations and Maintenance
- Conveyance Limits
- Storm Drain Velocity Criteria
- Spread Criteria
- Freeboard Criteria
- Finished Floor Elevations
- Water Quality Protection
- Drainage and Floodplain Easements

Data was also collected from an NCTCOG email survey completed in December 2018 asking if use of fully developed land use conditions was required in drainage criteria. The iSWM criteria review was based off the NCTCOG Tiered Measurement Form which is utilized as a checklist that can be used to determine iSWM status when applying to become an iSWM certified community.

Upon review, each criterion reviewed for each community was placed in one of the three categories:

- Follows iSWM criteria
- Partially follows iSWM criteria
- No coordinating criteria found

Date Completed:
4/20/2020

