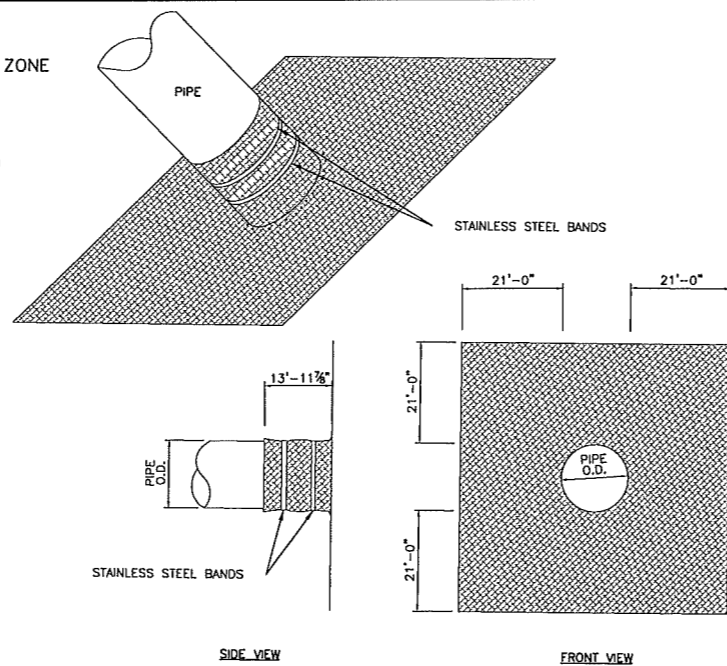
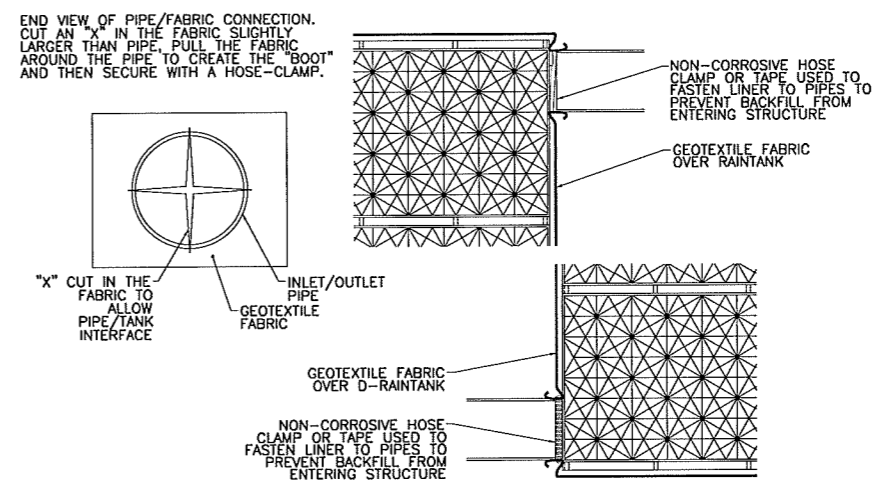


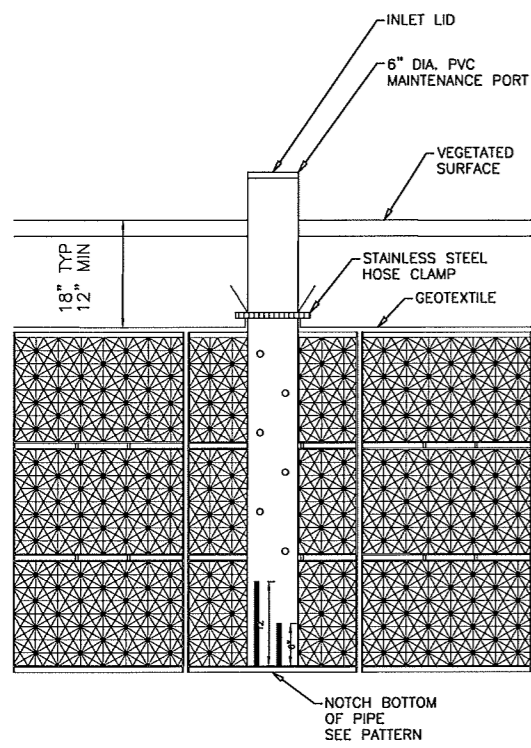
1 BIORETENTION CELL
NOT TO SCALE



2 OUTLET/INLET CONNECTION
NOT TO SCALE

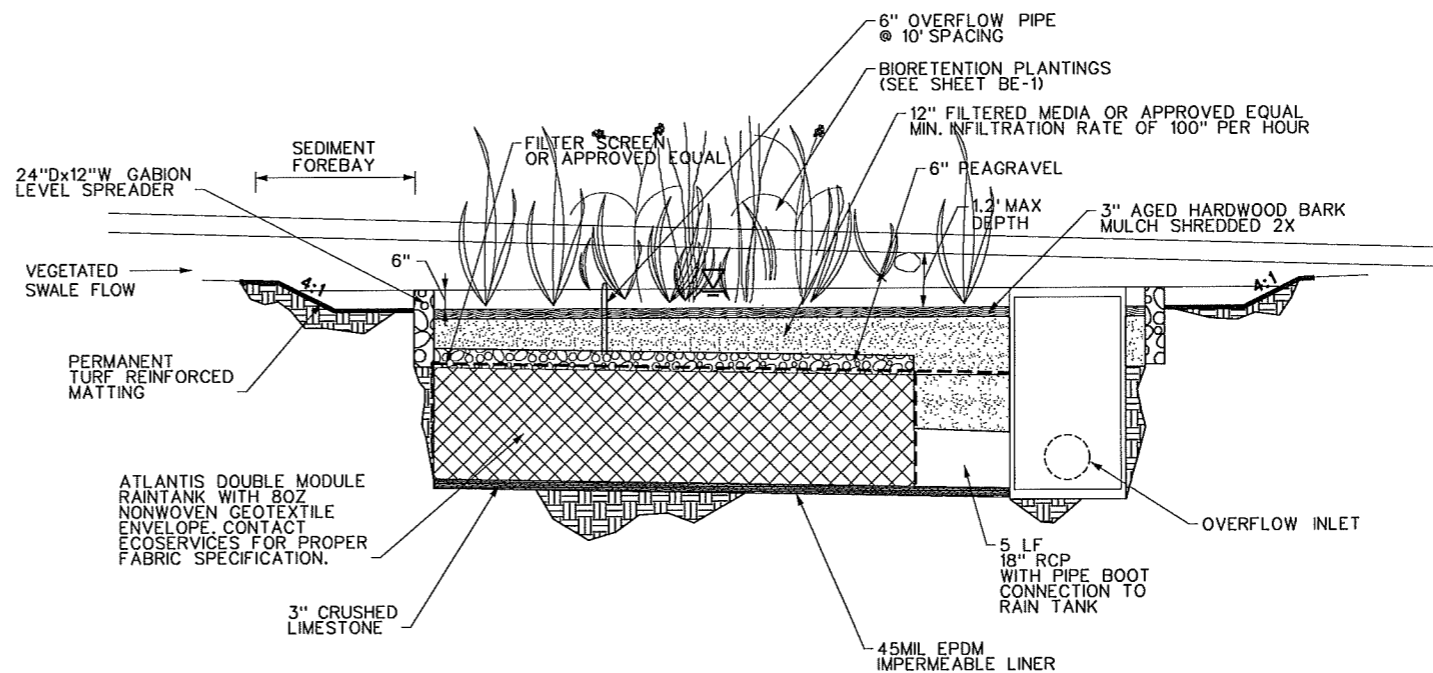


3 FABRIC PIPE BOOT FOR RAIN TANK
NOT TO SCALE



4 OVERFLOW PIPE
NOT TO SCALE

MAINTENANCE PORT
THIS PORT IS USED TO PUMP WATER INTO THE SYSTEM AND RESUSPEND ACCUMULATED SEDIMENT SO THAT IT MAY BE PUMPED OUT. MINIMUM REQUIRED MAINTENANCE INCLUDES A QUARTERLY INSPECTION FOR THE FIRST YEAR OF OPERATION AND A YEARLY INSPECTION THEREAFTER. FLUSH AS NEEDED



5 BIORETENTION CELL PROFILE
NOT TO SCALE

FREESE AND NICHOLS, INC.
TEXAS REGISTERED ENGINEERING FIRM F-2144
ARE A SALINAS
105144
3/15/11

FREESE NICHOLS
1701 N. Market Street, Suite 500, LB 51
Dallas, TX 75202-2001
Phone: (214) 717-2201
Fax: (214) 717-2200
Web: www.freeze.com

CITY OF ROWLETT
MERRITT ROAD PAVING IMPROVEMENTS
CIVIL

MISCELLANEOUS BIOSWALE DETAILS

ROW09317	DATE: 03/30/11	DESIGNED: AS	DRAWN: CHM	CHECKED: CHM	FILE NAME: cv-trt-dt-dmg02.sht
VERIFY SCALE Bar is one inch on original drawings if not on this sheet, adjust scale.					

MicroStation V8 User: chm Office: Dallas
ROW09317 N:\P\Drawings\cv-trt-dt-dmg02.sht
Plot Scale: 40,000.00 / 1 in. Model Default
Date: 03/31/2011 - 04:10:41 PM Project: Freese and Nichols, Inc.