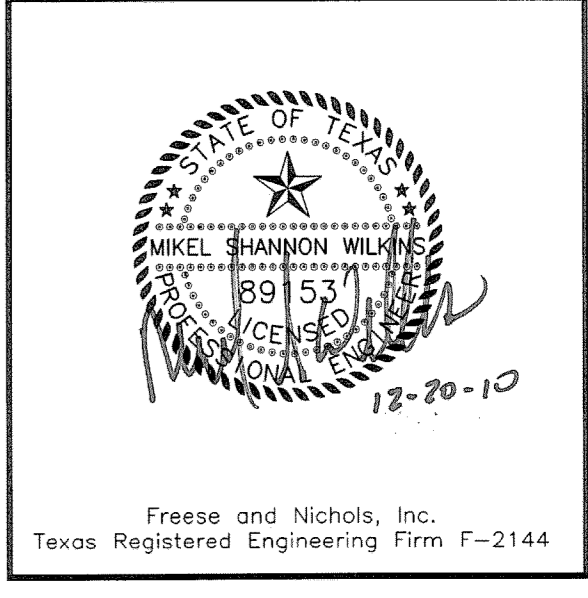
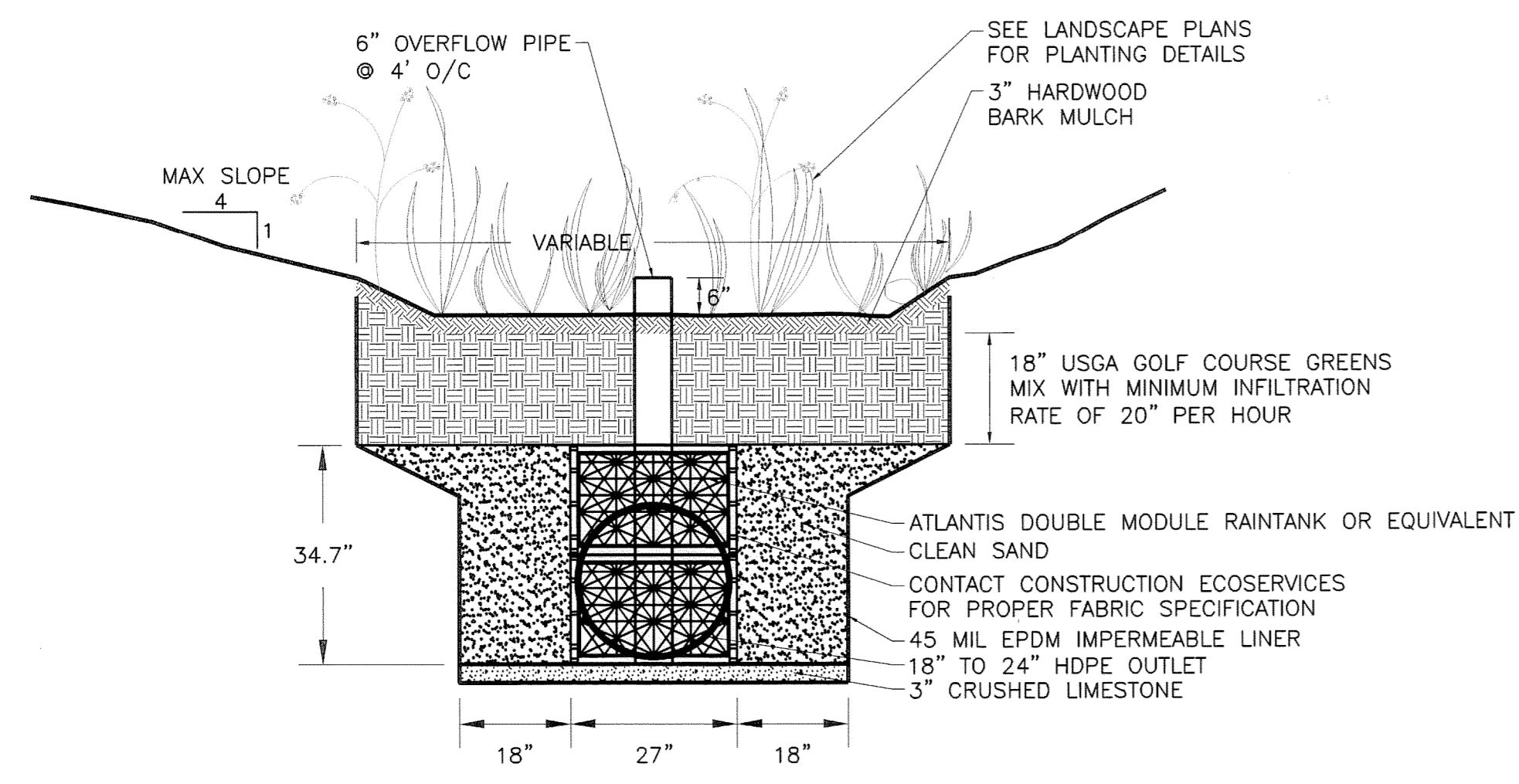


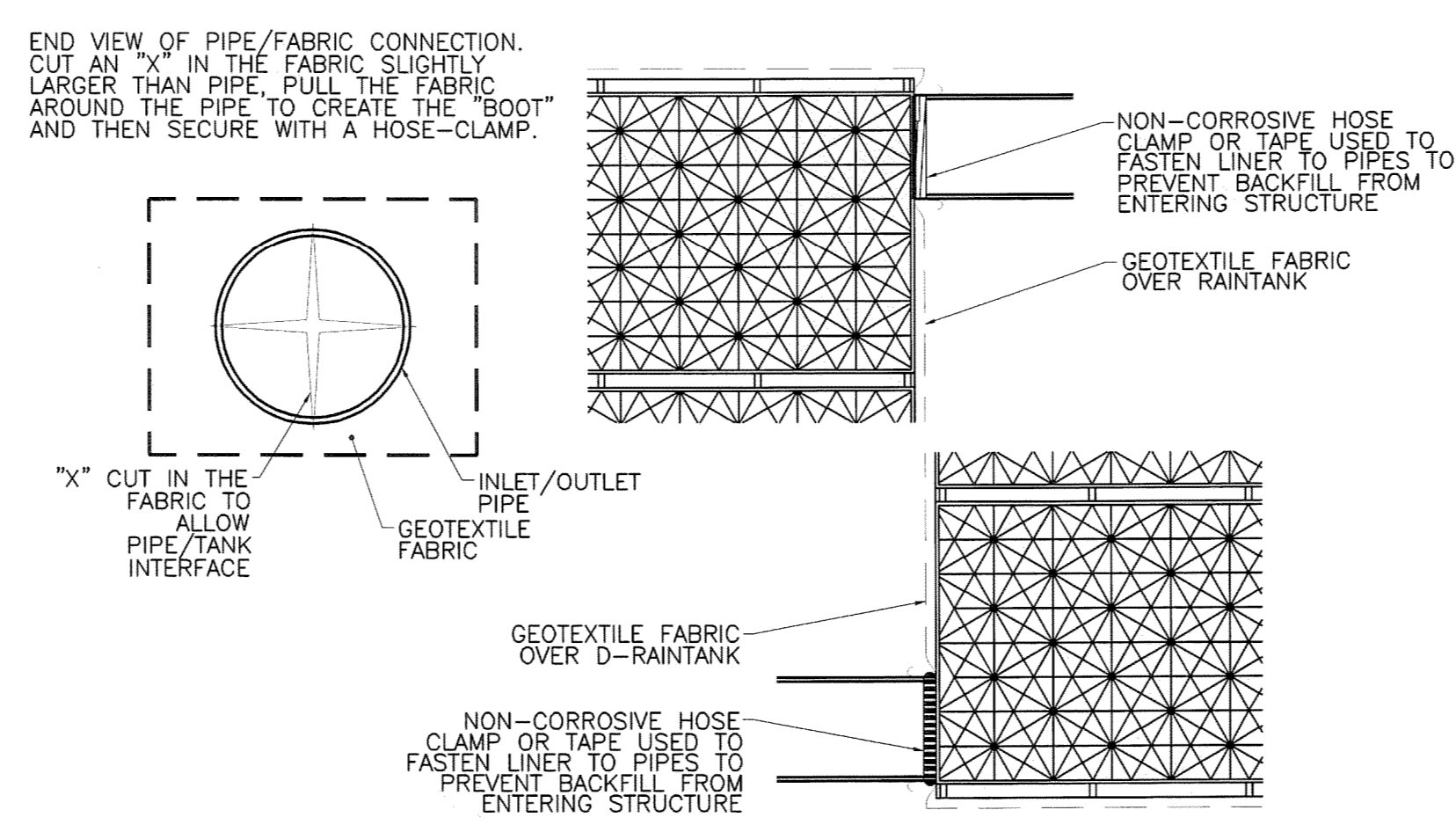
ELM FORK ATHLETIC COMPLEX
for
City of Dallas
Park and Recreation Department



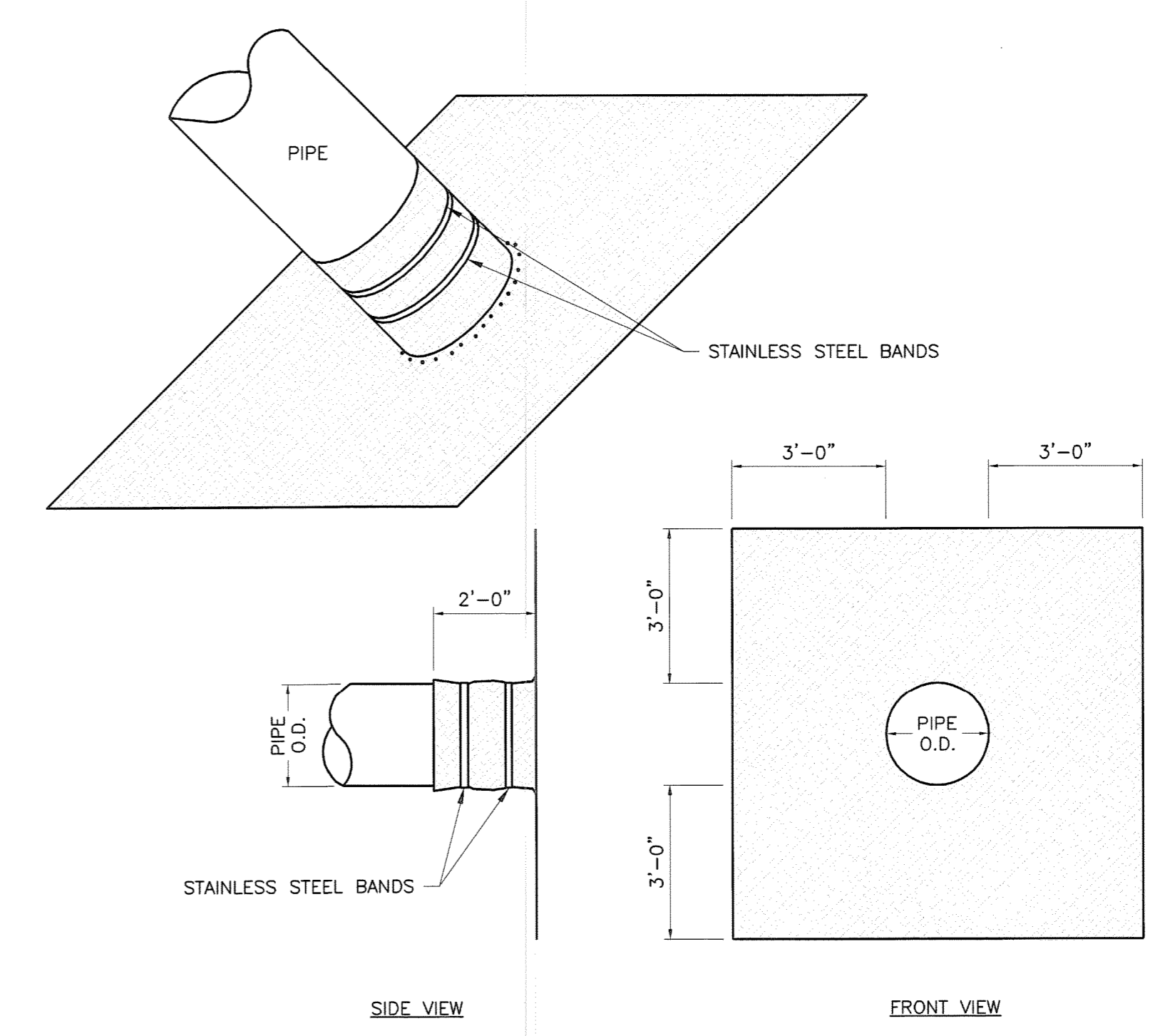
Issued for Bid
DECEMBER 20, 2010



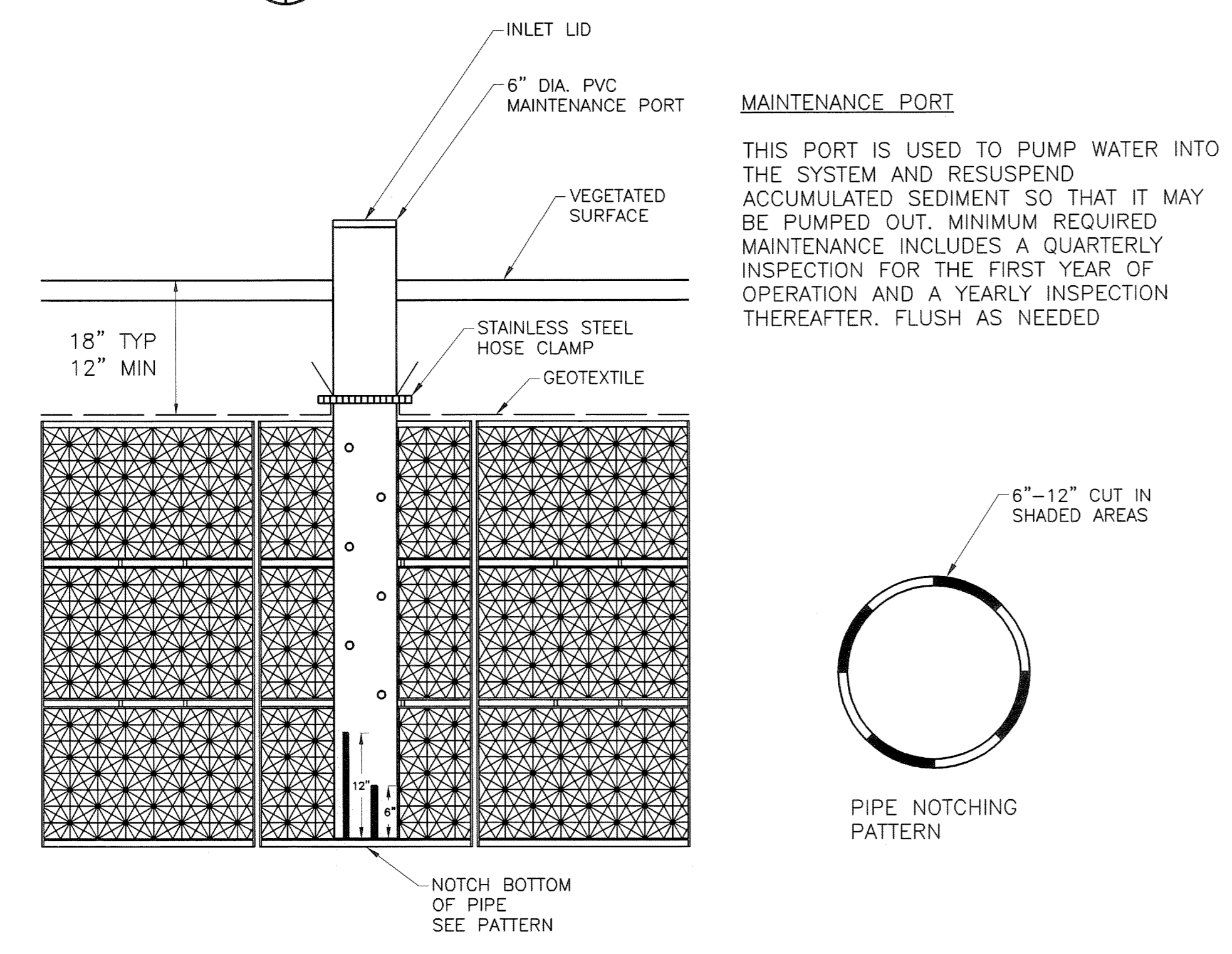
1 BIORETENTION CELL
NOT TO SCALE



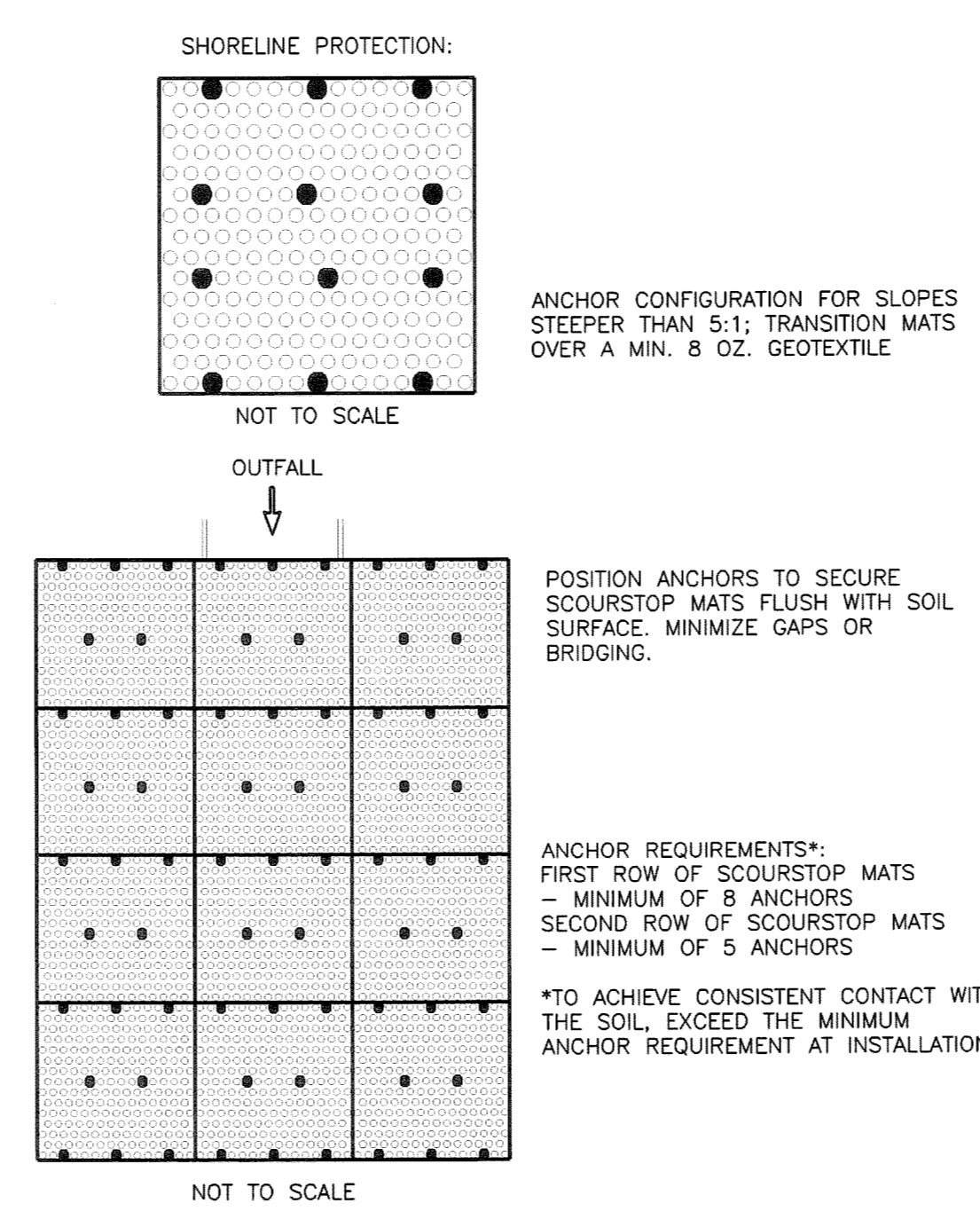
2 FABRIC PIPE BOOT FOR RAIN TANK
NOT TO SCALE



3 OUTLET/INLET CONNECTION
NOT TO SCALE

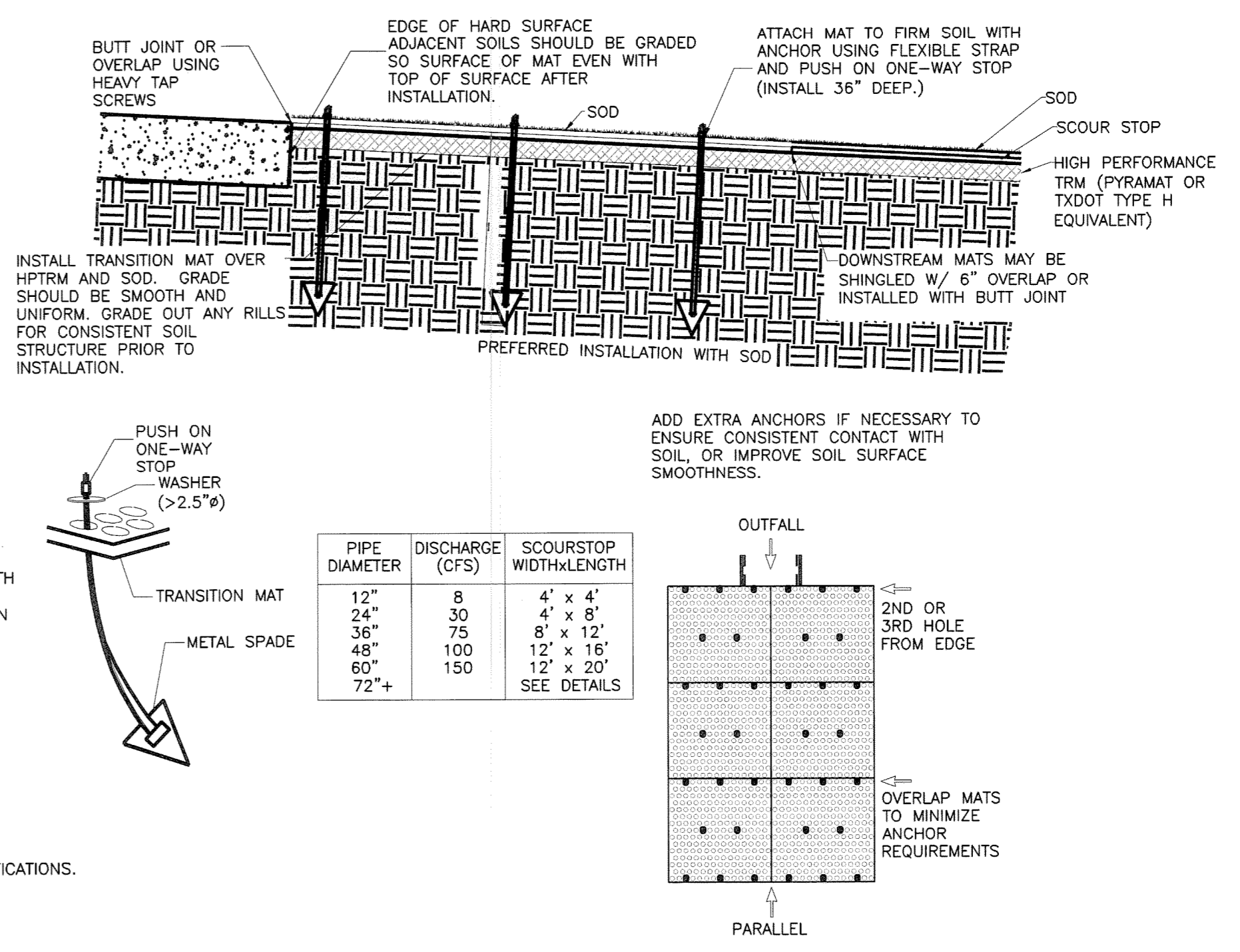


4 OVERFLOW PIPE
NOT TO SCALE



*FOR MORE INFORMATION ON REINFORCED SOD, CONTACT JOHN CRIDER WITH EROSION SOLUTIONS, LLC; ROSSVILLE, KS (785-584-6050).

NOTES:
1. INSTALLATION TO BE COMPLETED IN ACCORDANCE WITH MANUFACTURERS SPECIFICATIONS.
2. DO NOT SCALE DRAWINGS.
3. CONTRACTORS NOTE: FOR PRODUCT AND COMPANY INFORMATION VISIT www.CADdetails.com/info REFERENCE NUMBER 714-010.



5 SCOURSTOP MAT TYPE H INSTALLATION
NOT TO SCALE